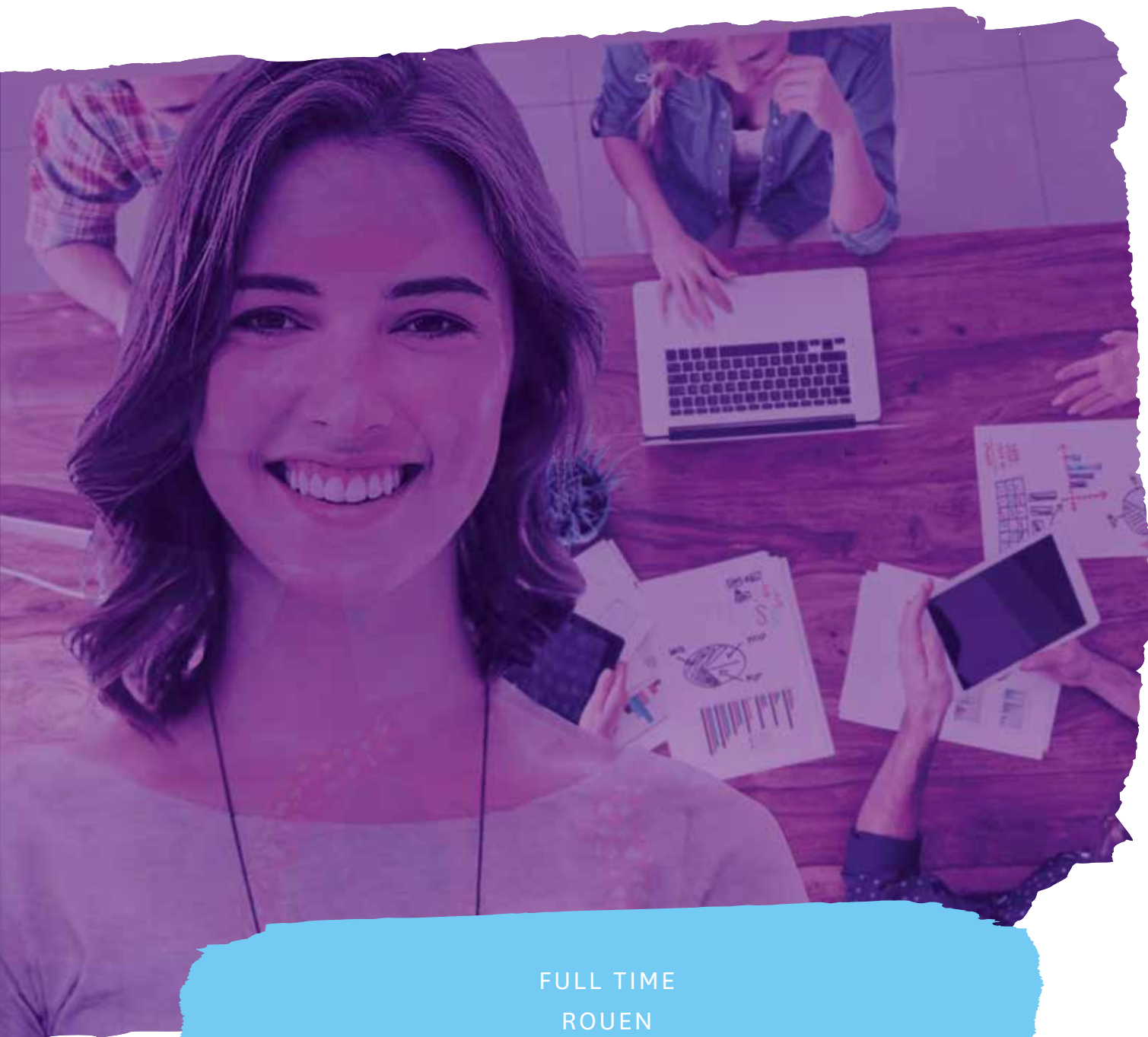


# FULL TIME MASTERS®

M.Sc. IN SUPPLY CHAIN MANAGEMENT



FULL TIME  
ROUEN

**NEOMA**  
BUSINESS SCHOOL

# NEOMA Business School, A MAJOR MANAGEMENT SCHOOL

## PROVEN EXPERTISE AND A PROLIFIC TRACK RECORD...

Drawing from the wealth of its 145-year history, NEOMA Business School benefits from the assets originating from its founding schools (in 1871 at the Rouen school and in 1928 at Reims). Marketing, Finance, Commerce, Supply Chain... there are numerous disciplines based on NEOMA Business School's proven expertise and teaching methods. The exceptional careers of several thousand graduates, brought together to create one of the strongest networks is the strongest proof of NEOMA Business School's excellence. Our incomparable academic network and the strength of our links with the international business world are what make NEOMA Business School a major school for management studies.

“

We nurture and support the managers and entrepreneurs of tomorrow, those who are capable of providing responsible leadership and going beyond the dominant models of our day ”

## ...COMBINED WITH A NEW VISION OF LEADERSHIP

Today in a constantly shifting world where change has become the norm, ensuring stable, long-lasting employability is about knowing how to turn those changes into an opportunity for development. Going beyond individual success, it is a matter of knowing how to deploy talent and apply it to the greater performance of many. The essence of our profession has remained the same for 145 years: to train and instruct students in a collection of management science disciplines to develop leading edge skills and knowledge.

**3** campuses:  
Rouen, Reims and Paris

**3** international  
accreditations



**200**  
permanent professors

**1,600**  
professional speakers  
and presenters

**590**  
collaborators

**9,500**  
students

1 network of more than  
**55,000** alumni  
in France and around the world

**300**  
international partners  
in **75** countries

**200**  
partner companies

**A large portfolio  
of programmes,**  
from Bachelor degrees to  
Executive Education courses.

# Our state of mind: **#Humanship**



RESHAPE THE NORMS



LISTEN TO EMOTIONS



STAY CONNECTED

## **Three strategic orientations, applied in an original, transversal way, reflecting genuine expertise:**

### **Leadership and agility**

We coach you to develop shared leadership skills to generate greater business efficiency and performance. This approach to assuming leadership can reinvent a company and unify collective forces to expand boundaries and emphasize new opportunities for innovation.

### **Entrepreneurship**

We aim to instill within you the desire to strive for innovation, creation, and experimentation that goes beyond traditional company building and takeovers.

### **Personal and professional development**

We prepare you for successful and stable professional integration through our emphasis on the foundation of key managerial skills that match the needs of various companies and the business world in general.

## **A “made by NEOMA BS” experience**

**NEOMA Business School invests predominantly in three areas which rely on the many positive attributes upon which we have built our reputation:**

- **A strong network** of professional, academic and alumni partners located throughout the world. NEOMA Business School is the most connected school in terms of its associations with all the management schools in France, and you will be one of the primary students to benefit from this multi-connected environment.
- **Strong, close relationships with companies**, which are recognised in numerous rankings and surveys and which guarantee the solid merits of our pedagogy (through internships, apprenticeship contracts, study tours, visiting professional speakers...).
- **Innovative, experience-based teaching** with a culture of original real-life professional simulations and genuine immersion into a business environment: integration seminars, business games, case studies, etc.

**ANNE-SOPHIE COURTIER**  
*DIRECTOR OF FULL TIME  
MASTERS PROGRAMMES*



Backed by over 30 years of expertise, the Master's programmes at NEOMA Business School are perfectly adapted to the constantly-evolving requirements of the corporate world.

Teaching students to be agile, whilst providing innovative solutions to employers, is core to the mission and commitment of NEOMA BS. Combining a solid focus on academic excellence, and an experiential approach to learning and the development of leadership skills, NEOMA Business School's Master's programmes provide the knowledge and abilities required to enable students to pursue their professional ambitions and achieve their personal goals in a stimulating multicultural environment.

“

Develop the knowledge and skills essential for the leaders of tomorrow's globalised professional environment.”

# The Philosophy behind NEOMA Business School FULL TIME MASTERS' DEGREE PROGRAMMES

**NEOMA Business School has established an international reputation thanks to its expertise in a variety of key disciplines: Supply Chain, Marketing, Management, Luxury, Project Development, or Finance.**

Predominantly taught in English and designed for students of all nationalities, NEOMA Business School Full Time Masters' degree programmes (Master of Science and Advanced Master) offer you the ideal gateway to the world of international business. Drawing on the school's well-established reputation for research and academic excellence, our Masters' degrees are constantly reviewed and developed, to respond to the ever-changing requirements of a continually evolving corporate world.

NEOMA Business School campuses provide the ideal international learning environment in which to discover and experience diversity at every level (faculty, class, student clubs and associations...) and to study and learn in an environment designed to maximise the student experience and prepare you for the professional world.

Studying for a full-time Master's degree at NEOMA Business School is an opportunity to:

- Complete and/or add value to an existing academic education or professional situation
- Develop personal and professional agility, adaptability and leadership skills
- Develop specialised knowledge and culture, related to the international business environment
- Increase managerial and professional potential
- Enhance employability

Join one of our Full-Time Masters, and take full advantage of a blended experience that will develop your agility and employability!

Full-time Masters degrees strengthened by expertise of over **30** years

**International certifications:**  
CFA, PRINCE2, MS PROJECT, PMI, Six SIGMA

A **4-to-6 month** internship experience

Programmes lasting from **12 to 15** months

**International programmes**  
taught in English and French

Over **75%** international students and **100** nationalities

**Campuses: Reims, Rouen and Paris**

**Diplomas accredited or labelled CGE\*, RNCP level 1\*\***

\*Conférence des Grandes Ecoles (or CGE) brings together higher education and research institutions in France and abroad which train their graduates with a view towards excellence, in partnership with the business world, economic representatives and civic society.

\*\* French National Framework of Qualifications.

# Why choose AN ADVANCED MASTER OR A MASTER OF SCIENCE FROM NEOMA BUSINESS SCHOOL?

## ADVANCED MASTER

### > **International Financial Analysis.**

An Advanced Master is a high-level Bachelor's degree (equivalent to a 6-year Bachelor's degree by French education standards). It is designed to train experts in a specific field of study. Accredited by the Conférence des Grandes Ecoles, the Advanced Master brings a guarantee of dual skills and boosts career prospects. This label is based on criteria of selectivity and academic quality. It is delivered upon successful completion of a rigorous auditing procedure and is highly valued by employers and the corporate world.

## MASTER OF SCIENCE

### > **International Luxury Management • Supply Chain Management • Global Management • International Project Management • Marketing French Excellence.**

Originally devised for international students or students who wish to join a multicultural class, these programmes are taught entirely in English. They are designed for students eager to acquire a high-level specialisation in an international environment. This degree requires the completion of both research work and a thesis or dissertation.

These masters do not compete with one another. On the contrary, they complement each other or are a different route to the same destination: the guarantee of life-long and worldwide employment with the added bonus of proof of an expert area of knowledge.

## 5 good reasons

### TO OPT FOR THE NEOMA BUSINESS SCHOOL FULL-TIME MASTERS

- Choose a Full-time Master ranked in the Top 15 in its category\*
- Longstanding expertise developed with an international outlook: 15 months to specialise in your chosen subject in English or French, in Supply Chain, Marketing, Management, Luxury, Project Development, or Finance.
- Innovative teaching methods fostering an experiential approach: 4-to 6-month internship and a variety of business cases and simulations
- Integrate an international environment: 75% of students, 55% of the faculty
- Join the 4th biggest network of French Business Schools with over 55,000 Alumni based all around the world.



# #theychooseNEOMABS

## PARTICIPANT PROFILE, Diversity as an asset

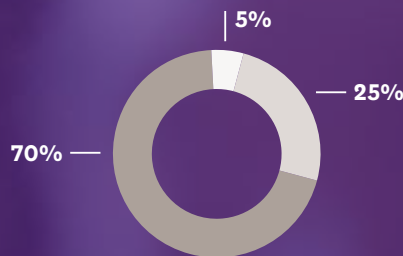
### NATIONALITIES

**75%** of NEOMA Business School Full Time Masters students come from outside of France, mainly Asia, Europe, Latin America, and Africa.



### ACADEMIC BACKGROUND

- Arts, Humanities
- Engineering & Sciences
- Business & Economics



*NEOMA Business School's Masters classes promote interaction with fellow students in an international environment where open-mindedness, experience and passion prevail.*

## TWO-YEAR M.Sc. OPTION

Specially designed for students who are completing a three-year Bachelor's degree, or who are from a non-business background, this two-year option provides the ideal opportunity to obtain a Master of Science from NEOMA Business School. During the first year M.Sc., students from all the M.Sc. disciplines work together in a highly internationalised environment, to cultivate a Master's mind-set: the ability to work independently and in groups, academic rigour and objective-based learning. Emphasis is placed on personal and professional development, as well as critical thinking, language and analytical skills.

Upon successful completion of the first year, students continue their studies in their selected M.Sc. specialisation:

- M.Sc. in Global Management
- M.Sc. in International Project Development
- M.Sc. in Marketing French Excellence
- M.Sc. in Supply Chain Management



# An immersive teaching experience

## DESIGNED TO BOOST EMPLOYABILITY

### FULL-TIME TRAINING PROVIDING A STRONG THEORETICAL BASIS

Depending on the Master you choose, the curriculum spreads over 12 to 15 months on a full-time basis (a duration ranging from 350 to 480 hours).

The pace of the programmes allows you to focus on the theoretical dimension of the courses and work in teams to implement various projects. The first 6 to 7 months are commonly dedicated to the delivery of core courses, interspersed with a series of in-company immersions and field trip studies either in France or abroad.

Courses are designed by NEOMA Business School international professors, leaders in their area of research and expertise; professional teachers also participate in the design and delivery of classes. Taught in English and in French, courses are enriched with the companies' input in order to be aligned with real-world business expectations and the School's vision of leadership.

### AN EXPERIENTIAL PEDAGOGY

In a world of constant change, we prefer to help you “learn how to learn” so that throughout your career you continue to acquire the knowledge, skills, methods, and tools that will give you the best chance to be successful and help your future employers develop.

We believe that there is no better way of truly understanding the corporate world than by involving yourself in a real case study (business cases, simulations, challenges, etc.). Engaging students in innovation is achieved by interaction with the professional field. This may take different forms.

At NEOMA Business School, students are confronted by highly challenging situations, such as the creation of a brand, how to launch and market a product from scratch, and finding innovative solutions to adapt and anticipate various international contexts.

#### FOCUS ON...

A group of selected students from the M.Sc. in International Luxury Management worked on the Geoffroy Champagne challenge: to devise a communication strategy for a specific “champagne” or create new packaging.

In 2016, the whole class of the M.Sc. in International Project Development literally isolated itself in a bus to work under pressure, out of their comfort zone. The goal: to yield innovative solutions on how to remain a leader on the Safety market.



## INTERNSHIP & FINAL DISSERTATION: REAL CORPORATE EXPOSURE

The remaining months of study are dedicated to a 4-to 6 month internship and the preparation of the final dissertation. This period in a company is highly recommended but not mandatory. However, nearly 100% of NEOMA Business School full time Masters' students go on an internship to complete their experience of the programme and implement the expertise of their choice. As a result of the in-company project or mission, the student must obtain official approval before he or she enters the company and accepts the mission. The trainee is supervised by a corporate tutor who will make sure that the project and the related activities are in line with the specialisation pursued in the Masters' degree.

### **A key step towards obtaining the full time Master: the final dissertation**

The dissertation serves to perform research on a specific subject. It demonstrates the knowledge acquired through the programme and applied during the in-company project-work, mission or internship. The participant is assisted in the definition of the subject-matter by the supervisor. The participant will be taught how to conduct research thanks to methodology courses delivered in the curriculum. The Master's degree is validated provided all the modules, mission, internship and the professional dissertation are completed.

## DEDICATED UNIT TO SERVE YOUR EMPLOYABILITY

Students are supported by NEOMA Business School Career Centre. This unit is organised by geographical zone (Europe, Asia, North America, and Latin America) and it provides the student with personal guidance in multiple ways (CV, motivation and speculative letters, personal branding, etc...) all adapted to his or her profile in order to help in the search for internships and employment. Based on the expectations and best practices of companies and on research conducted by our professors, this unit supplies all the tools and advice the student needs to succeed in his or her professional career.

“



**HAMZA EL ALAMI**  
Supply Chain  
Management  
graduate 2016

The tools provided by the school were helpful along my journey to reaching my academic goals. Starting from the daily emails about internship offers from more than 200 companies in France, the library for research, field trips offering a more realistic view and experience of the material, and most importantly, the Enterprise Forum organised within the school... The Enterprise Forum was the opportunity to prove myself as a worthy candidate. I got to be interviewed by a great number of high-level companies such as BMW, Microsoft, and DANONE, and I found my internship with BMW. All in all, I had a very positive experience being a NEOMA Business School student, and I would not trade that for anything in the world. ”

# Admissions

## OUR TEAM OF EXPERTS TO ACCOMPANY YOU FOR 10 MONTHS

The Admissions Department experts are at your disposal to provide detailed information on the Full Time Master's programmes, feedback on your personal profile and help you finalise your personal and professional project.

### APPLICATION REQUIREMENTS

#### Applicants must have the following:

- A Bachelor's degree, or approved equivalent in a related field (BAC+4).
- Fluent English and/or fluent French face-to-face interview evaluation (depending on choice of programme). The interview lasts 20 to 30 minutes before a jury consisting of a professor and/or a professional. The interview's goal is to understand the applicant's motivation, to analyse the relevance of his or her professional project to the chosen programme.
- Minimum 6-month professional experience, internship or other relevant experience.
- Dynamic international profile and good team player.
- Relevant professional goals.

#### Application consists of the following:

- the online application: <http://apply@neoma-bs.fr>
- Provide scanned copies of all original documents in English or French.
- Successful candidates are contacted for interview.
- Students residing abroad are similarly interviewed via videoconference

#### Results:

Candidates are usually informed of the results by email within two weeks of the interview (if the application file is complete).

### REMARKS

#### International students (outside European Union)

Students are recommended to sit their tests as early as possible in order to obtain admission results in time for visa requests. Candidates who meet the entry requirements will be interviewed by Skype or in person.

## FOCUS ON... INTERNATIONAL WELCOME

Originating from various regions of the world with a diversity of academic and professional backgrounds, the "orientation week" is the key moment when students mix and dive into a cross-cultural seminar (icebreaking, team-building activities off campus...).





# NEOMA BUSINESS SCHOOL CAMPUSES

## LIFE IN REIMS: AN ECONOMIC CROSSROADS!

Ideally located in France as well as at the heart of Europe, Reims has naturally become a major industrial crossroads: pharmaceuticals, health care, food industry, bio technology, wines and spirits, etc.

Its proximity to Paris gives it obvious appeal in terms of investment for companies who constantly install offices, manufacturing sites, service centres, call centres and even, more recently, television and music recording studios.

And of course, as the cradle of champagne, Reims is home to the most famous Champagne houses (Lanson, Pommery, Mumm, Veuve Cliquot, Ruinart, Krug, Taittinger and many others).

### Reims Campus

The NEOMA Business School Reims campus is located on two sites with a contemporary architectural style, located just five minutes from each other by tram.

Close to the city centre and major transport routes:

- 10 min from Reims city centre by tram
- 10 min from the TGV railway station by tram
- 30 min from Charles de Gaulle airport by train
- 45 min from the centre of Paris by high-speed train

### Accommodation in Reims

Students residence halls are available on campus.

Near the campuses or in the city centre you can also find accommodation in student residences or private flats, take a room in a youth centre, or choose to share your accommodation with a senior or disadvantaged citizen.

NEOMA BS has its own accommodation platform to assist you with:

- Finding/offering accommodation
- Finding flatmate(s) and organising flat-shares
- Finding/offering sublets
- Finding/offering temporary rooms

<http://housing-platform.neoma-bs.fr>



## LIFE IN ROUEN: BE PART OF THE 'SEINE'!

Living and studying in Rouen means living in a city with a rich history and heritage but resolutely focused on the future. Between the river and the hills, tucked into a bend in the River Seine, Rouen enjoys an exceptional natural environment. A modern city that is rediscovering river, docks and maritime identity, Rouen is open to the whole world and is well-established as a major European city.

### **Rouen Campus**

The NEOMA Business School Rouen campus is a very special 7-hectare location surrounded by woods.

Close to the city centre and major transport routes:

- 10 min from Rouen city centre by bus
- 15 min from the railway station by bus
- 1 hr 15 from Paris by train or car
- 1 hr from the Normandy coast by train or car

### **Accommodation in Rouen**

Rouen offers numerous housing options (rooms, flats, etc.) in the city centre where 90% of students live. Rental is around €250 per month for 25 m<sup>2</sup> (including housing subsidy). Accommodation costs can be reduced; students often choose to live in flat shares.

NEOMA BS has its own accommodation platform to assist you with:

- Finding/offering accommodation
- Finding flatmate(s) and organising flat-shares
- Finding/offering sublets
- Finding/offering temporary rooms

<http://housing-platform.neoma-bs.fr>



# Financing YOUR STUDIES

At NEOMA Business School, we are aware that funding education is a central concern for our students. For this reason we do all we can to help each of you develop a top-quality programme of studies by offering you solutions adapted to your personal situation. The staff at our information and service centre, the HUB, can provide you with information and assist you with your administrative needs.

State grants, loans, academic scholarships... there are many solutions that can help you achieve all your professional ambitions!

## SCHOLARSHIPS/GRANTS

### The Eiffel scholarship

The Eiffel scholarship (bourse Eiffel) is granted by the French Ministry of Foreign Affairs to international students who live outside France and who show great interest in studying in France. Our team of experts will assist you in preparing your application and presenting it to the French Ministry of Foreign Affairs.

### NEOMA Business School Foundation scholarships

Our Foundation supports equal opportunities in higher education. If you encounter financial difficulties, the foundation may award you an academic scholarship that can cover up to 50% of your tuition fees.

Interest-free unsecured loans can also be awarded to students in Advanced Masters and Masters of Science programmes.

Student applications for financial assistance are assessed at two annual meetings, based on three criteria:

- Academic excellence
- Financial or family circumstances
- The candidate's personal merit





## LOANS

### **Student bank loans**

Banks grant loans at a preferential rate of about 1% to students attending Grandes Ecoles, as long as you have a guarantor. We organise a “banking fair” at the beginning of each school year on our campuses, attended by representatives of around a dozen banks who you can meet to arrange a loan.

### **Government-backed student loans**

The government has set up a student loan guarantee fund in partnership with certain banks (Société Générale, Crédit Mutuel, C.I.C , Banque Populaire and certain Caisses d’Épargne). They can offer a maximum loan of €15,000 to all students up to 28 years old, be they French, or citizens of the E.U. or the European Economic Area, regardless of income or parental/third-party guarantees.

The interest rate is set by the bank. The possibility of partially or totally deferring your repayments until you graduate is also at the discretion of the student borrower. Learn more by asking the banks on this programme.

# M.Sc. in

# SUPPLY CHAIN MANAGEMENT

DURATION: 15 MONTHS

CAMPUS: ROUEN

Since the mid 1990's, globalisation and technological advancement have transformed logistics and cooperative business into a new concept: Supply Chain Management. Supply chain has resulted in the extension of the perimeter of business operations and logistics, creating the need for more interaction between the various logistics stakeholders (financial, organisational, customer service...). Calling for more collaborative relations and adequate partnerships, corporate and industrial entities constantly aim to reduce costs and optimise services. The more complex the relationship, the more transversal professional profiles have to become. The NEOMA BS Master of Science in Supply Chain Management meets these changing market demands. Thanks to its inter-disciplinary teaching approach, the programme not only focuses on the core disciplines of supply chain management and correlated subjects such as strategic purchasing and information systems for supply chain, but it also puts the emphasis on soft skills in order to fine tune students' professional profile and training.

“

An international intensive programme structure designed to train you as a future expert in logistics and procurement. ”



**FOUAD BEN ABDELAZIZ**  
*Head of the M.Sc. in Supply Chain  
Management Programme*

# Why choose

## THE NEOMA BUSINESS SCHOOL'S M.Sc. IN SUPPLY CHAIN MANAGEMENT?

Joining the NEOMA BS M.Sc. in Supply Chain Management is to benefit from a strong local industrial network with one of the largest ports in Europe (Rouen and Le Havre). The programme will equip you with both technical and managerial skills that will enable you to face unconventional and challenging problems in Supply Chain and train you to work in international companies.



### 5 good reasons to choose

#### THE NEOMA BUSINESS SCHOOL M.Sc. IN SUPPLY CHAIN MANAGEMENT

- Benefit from the **close connections with main supply chain infrastructures and representatives** such as Port de Rouen, SNCF, Rungis Market...
- Participate in a **5-day intensive seminar** (SNCF simulator, Le Havre Port visit, Rungis market visit, SAP training etc.) to understand the mechanisms of Supply Chain Management
- Prepare for **recognised professional qualifications**: PMI (Project Management Institute) and Six Sigma through extensive use of information technology tools including Ms Project, SAP, Visual Basic training for SCM applications and professional courses.
- **Apply for membership of the Association for Operations Management (APICS)** and of the Chartered Institute of Purchasing and Supply Management (CIPS).
- Develop **leadership and project management skills** in a varied multi-cultural environment through an **innovative and intensive structure programme** to become an expert in Supply Chain Management







## HONE YOUR MANAGERIAL AND SPECIALIST SKILLS, BUILD A STRONG PROFILE IN SUPPLY CHAIN MANAGEMENT

| PHASE 1<br>OCTOBER   | PHASE 2<br>NOVEMBER TO FEBRUARY   | PHASE 3<br>FEBRUARY TO APRIL   |   |
|--|---|--|---|
| <b>INTRODUCTION TO THE PROGRAMME</b>   | <b>CORE COURSES</b>   | <b>PROFESSIONAL COURSES</b>  | <b>END OF STUDIES</b>   |
| <ul style="list-style-type: none"> <li>• Introduction to Management Sciences</li> <li>• Strategic Purchasing</li> <li>• Industrial Organisation and Technology Innovation</li> <li>• Leadership and Talent Management</li> </ul> | <ul style="list-style-type: none"> <li>• Operations and Process Management</li> <li>• Introduction to Strategic Supply Chain Management</li> <li>• Information Systems for Supply Chain Management</li> <li>• Logistics and Transportation</li> <li>• Revenue Management</li> <li>• Research Methodology</li> </ul> | <ul style="list-style-type: none"> <li>• Risk and project Management</li> <li>• Managing Quality for Supply Chain Management</li> <li>• International Procurement</li> </ul> <p><b>TRAINING AND SEMINARS:</b></p> <ul style="list-style-type: none"> <li>• Maritime logistics with a visit to Le Havre Port and Rouen Port</li> <li>• Distribution seminar with a visit to Rungis market</li> <li>• Pharmacy Logistics with a visit to a pharmaceutical company</li> <li>• Railway Transportation Seminar</li> <li>• SAP Training</li> <li>• Visual Basic Training (VBA)</li> <li>• How to write a paper Seminars</li> </ul> | <ul style="list-style-type: none"> <li>• Professional experience. It can take the form of an internship (4-6 months), a job, the creation of a start-up company...</li> <li>• Final dissertation</li> </ul> |

EXPERIENCE made by NEOMA BS

EXPERIENCE made by NEOMA BS

EXPERIENCE made by NEOMA BS

EXPERIENCE made by NEOMA BS



**Tais Helena MILIONI PAGAN**  
**M.Sc. in SUPPLY CHAIN MANAGEMENT 2016**  
**Corporate trainers - Miami**

The Master of Science in Supply Chain Management programme brought me all the tools I had missed in my career, and what would make me stand out from the others in the industry. The practical application that we have during the programme focused on showing how companies and ports articulate supply chain's role. For me, NEOMA Business School was the most unique and important school, because the programme was aligned with the topics that I considered priorities to boost my knowledge. The location was also the most attractive aspect of this

investment. I was always attracted to French culture, and this incredible combination for me was the perfect trifecta for my final decision in choosing NEOMA BS. ”

## PROGRAMME HIGHLIGHTS

**The M.Sc. in Supply Chain Management offers a specialisation in the realm of the management of the supply chain, planning and strategy within an international environment. The programme is based on technical and managerial courses which put into action theory and practice in the same module. The emphasis is on immersion and corporate relations (for instance, field trip to chemical and pharmaceutical sites).**

### **A strong experiential and immersive approach**

The 60-hour “**Capstone and Seminars**” module offers you more than an introduction to NEOMA Business School’s experiential approach; it blends theory (hard skills), discovery (soft skills) and immersion (practice) to give you some real-time learning style.

This module includes an 18-20 hour seminar, dedicated to the introduction of practical and theoretical research. The research can revolve, for example, around issues on planning and scheduling in pharmaceutical industry.

A series of **visits of main supply chain infrastructures** complete the theoretical courses and invite you to explore and discover supply chain activities. Over the months of March and April, students visit infrastructures.

**EXPERIENCES**  
*made by*  
**NEOMA BS**

- **The Port of Rouen:** Through topics dedicated to the fluvial and river approach of supply chain, you tour the infrastructure, considered as a major player in global shipping. You find out how this river port the activities of which are originally dedicated to cereals operates and connects with the multimodal system (railways and roads).
- **The SNCF simulator:** You are integrated into a realistic simulator developed by SNCF (one of the top, if not the first worldwide group of people transportation and mobility). You are confronted with a key issue in supply chain: scheduling (planning) and the role of the railway system in the European transport landscape.
- **The Port of Le Havre:** You discover the specific characteristics of a maritime/river port (ranked as one of the top four ports in Western Europe) with an emphasis on the aspects of warehousing. Supervised by a specialist in maritime geography from the CNRS (Centre National de la Recherche Scientifique), you learn how important is the maritime strategy in the world today. You experience a guided tour and benefit from an hour-presentation on the global function of Le Havre Port and explore the docks and warehouses.
- **Rungis Market “by night”:** Immersed in the biggest market of fresh produce in the world, you discover a different angle of logistics and transportation, namely how the river mode is built in order to serve the whole infrastructure of Rungis Market. The emphasis is chiefly put on the operations of transport and warehousing.



# #theychooseNEOMABS

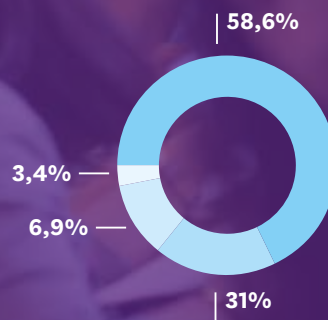
## PARTICIPANT PROFILE

Towards more and more international visibility for students seeking a specialisation combining technical and managerial knowledge

NEOMA Business School's Supply Chain Management class of 2016-2017

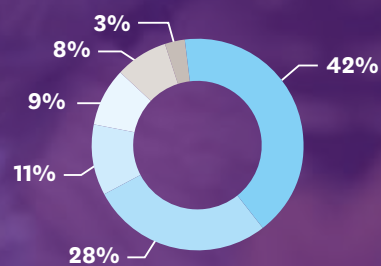
### ACADEMIC BACKGROUND

- Engineering
- Business
- Liberal Arts
- Others



### NATIONALITIES

- Asia
- India
- Americas
- Europe
- Africa
- Middle East



# Take your career TO A NEW LEVEL

The programme trains future specialist managers in international supply chain management and procurement.

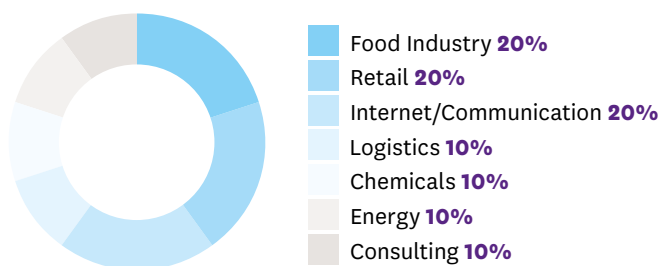
**€45K**  
average base salary

**64%** employed  
before leaving the school

**100%** employed within  
6 months after graduation

**80%** of our graduates  
are employed abroad

## SECTORS OF EMPLOYMENT



### A few of the possible jobs to which you can aspire:

- Procurement Manager
- Warehouse Manager
- Logistics Manager
- Forecast Coordinator
- Information Systems Manager

## YOUR NETWORK

NEOMA ALUMNI is the 4<sup>th</sup> largest Alumni network of French Business Schools, representing Alumni based in more than 120 countries across the world. NEOMA Alumni offers great opportunities to network through more than 300 events organised every year in France and abroad.



**64,500**

alumni and future alumni

- More than 55,000 alumni
- More than 9,500 current students



**22%**

live and work abroad



**400**

volunteers

**27** professional and leisure clubs

**21** local alumni clubs

**54** international alumni clubs

[www.neoma-alumni.com](http://www.neoma-alumni.com)

“

**Hamza EL ALAMI**  
M.Sc. SUPPLY CHAIN MANAGEMENT 2015

I am currently working as a Forecast Coordinator for the Chocolate segment at Mondelēz International (Previously known as KRAFT Foods. I am in charge of figuring out how many products, we – as a company – are going to sell during the month and over an 18-month period. Previously I was an intern at BMW France for six months in a similar role, where I was forecasting how many cars we were going to sell monthly, quarterly, and annually. In addition, I took on a project designed to monitor the performance of all the BMW Network with a sea of data, graphics and tables. It turned to be one of my greatest life experiences as I learnt a great deal of techniques and developed my skill sets acquired during my Master's programme, all of which helped me get the job I am in currently.”

# NEOMA

BUSINESS SCHOOL

## REIMS CAMPUS

59, rue Pierre Taittinger  
CS 80032 - 51726 Reims Cedex - France

## ROUEN CAMPUS

1, rue du Maréchal Juin  
BP 215 - 76825 Mont-Saint-Aignan Cedex - France

## PARIS CAMPUS

9, rue d'Athènes - 75009 Paris - France

[www.neoma-bs.fr](http://www.neoma-bs.fr)

